

# SA6 Spectrum Analyzer Module



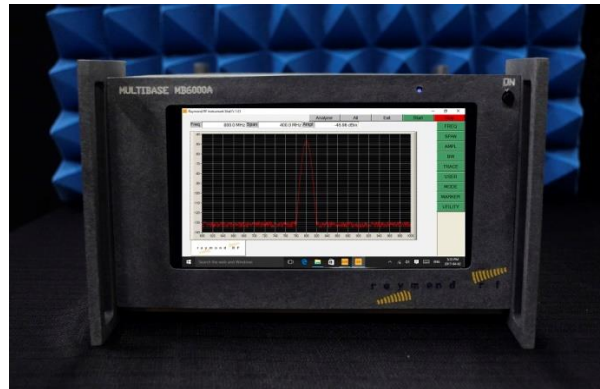
## Description

Raymond RF's SA6 Spectrum Analyzers are supported by our MultiBase Controller. With the optional GPIB Interface, it can be seamlessly integrated into industry standard EMC and Antenna Measurement Systems.

## Features

- Modular Designed Software linked with
  - TCP/IP
  - Customizable GPIB Commands
  - Software upgradeable with USB flash drive
  - Incorporates OEM Spectrum Analyzer
  - Includes both the Raymond RF interface and the OEM interface.
  - Calibration Verified by Raymond RF

## Spectrum Analyzer Module



## Specifications

	SA6-TSA8G1	SA6-RSA306B
• OEM	Triarchy Technologies	Tektronix
• Use	Basic Antenna Measurements, Wifi, Cellular	EMC Pre-compliance, Advanced Antenna Measurements, Wifi, Cellular
• Bandwidth (Hz)	1MHz - 8.15GHz	9kHz - 6.2GHz
• Dynamic Range	-110 dBm to +30 dBm	-160 dBm to +20 dBm
• 10 MHz Reference	No	Yes
• TSA8G1 specs	<a href="http://www.raymondrf.ca/resources/info-pack/multibase/brochures/tsa8g-cut-sheet.pdf">http://www.raymondrf.ca/resources/info-pack/multibase/brochures/tsa8g-cut-sheet.pdf</a>	
• RSA306B specs	<a href="http://www.raymondrf.ca/resources/info-pack/multibase/brochures/rsa306b-cut-sheet.pdf">http://www.raymondrf.ca/resources/info-pack/multibase/brochures/rsa306b-cut-sheet.pdf</a>	

## Options

- Industry compatible GPIB Interface. Designed for Commercial Measurement Software
- USB Keyboard & Pointing Device
- Rack mount kit for 1/2 width or full width 19" rack

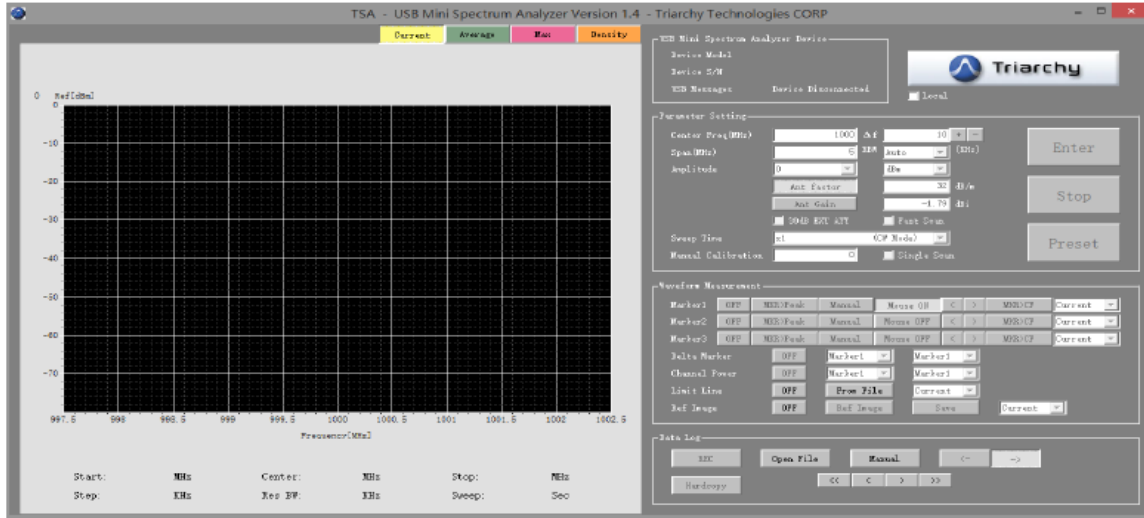
[www.raymondrf.ca](http://www.raymondrf.ca)

3994 Elphin Maberly, PO Box 23072, Ottawa, Ontario, Canada K2A 4E2

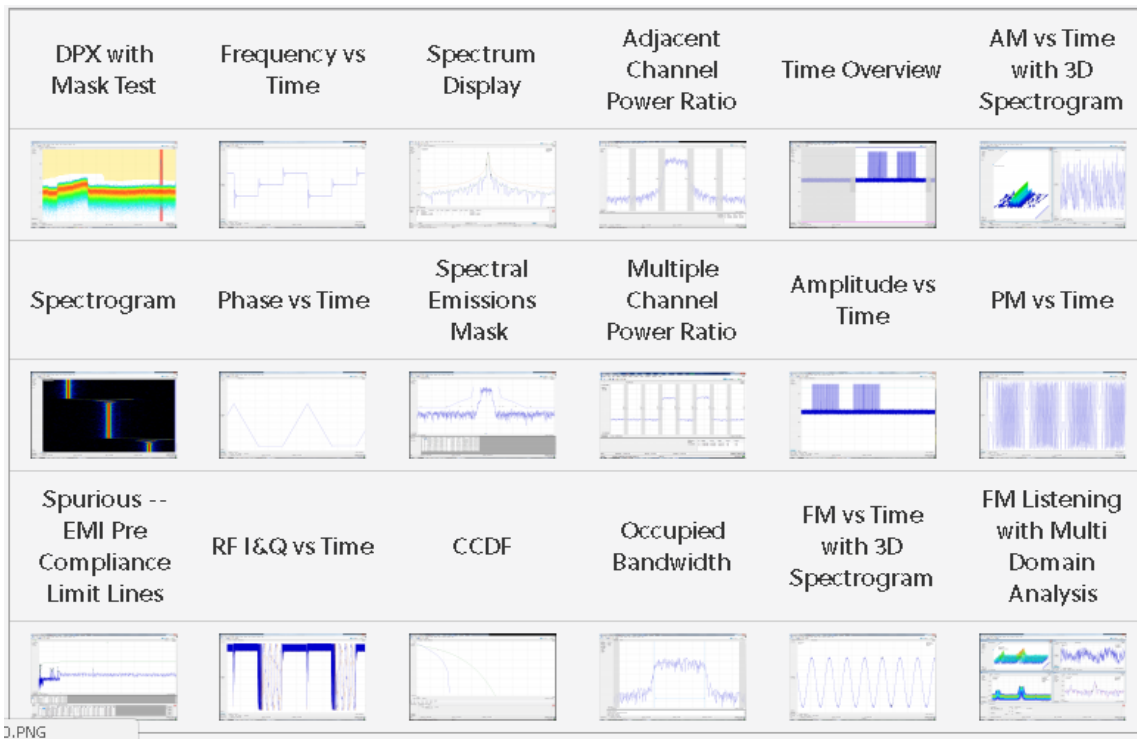
# SA6 Spectrum Analyzer Module



## TSA8G1 OEM Interface



## RSA306B OEM Basic Interface



[www.raymondRF.ca](http://www.raymondRF.ca)

3994 Elphin Maberly, PO Box 23072, Ottawa, Ontario, Canada K2A 4E2